

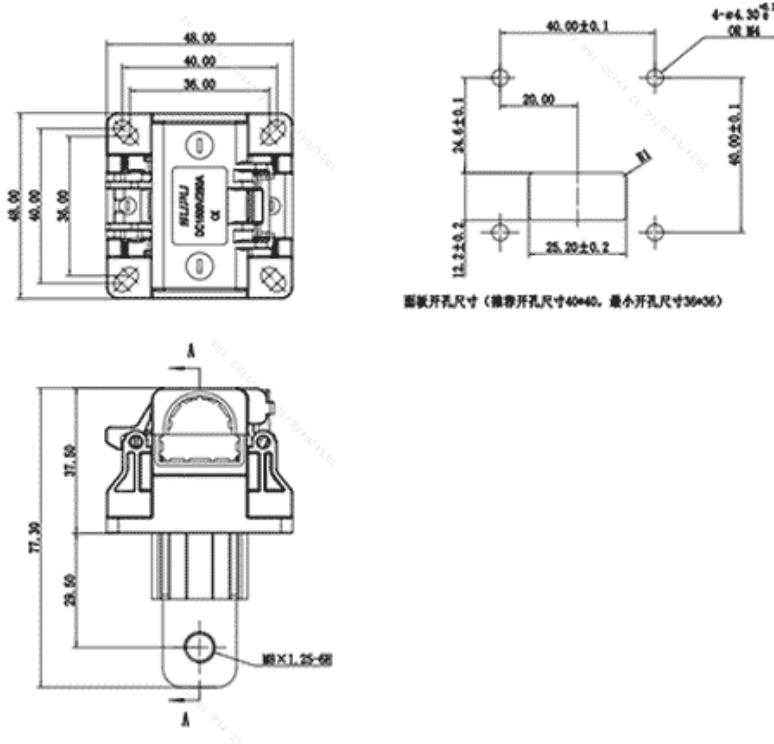


Product Type: IP20 connector

Product Name:ESF-SU250A19B

Product Description: Nominal operating voltage 1500V DC, Rated current 250A, Color: Black, wiring method: screw

Product Size



Parameters

| | |
|-------------------------------|---------------|
| ☞ SUPU ID | ESF-SU250A19B |
| ☞ Connection method | Screw thread |
| ☞ Protection Level | IP20 |
| ☞ Operating temperature range | -40°C~125°C |

| | |
|-----------------------------|--------------|
| ☞ Insulation material | PA |
| ☞ Insulation material group | III |
| ☞ Contact material | Copper alloy |
| ☞ Contact plating | Ni,Plated |

Technical data

| | |
|---|----------------------------|
| ☞ Overvoltage category | III |
| ☞ Degree of pollution | 3 |
| ☞ Rated impulse voltage | 10KV |
| ☞ UL Rated Current | 250A |
| ☞ UL Rated Voltage | 1500V |
| ☞ Conductor cross section rigid | 70mm ² (AWG2/0) |
| ☞ Conductor cross section flexible | 70mm ² (AWG2/0) |
| ☞ Rated cross section | 70mm ² (AWG2/0) |
| ☞ Can connect copper bar specifications | 18*4mm and more |

Commercial data

| | |
|--------------------------|---------------|
| ☞ Order No | ESF-SU250A19B |
| ☞ Packing unit | PCS |
| ☞ Minimum order quantity | 1 |

Ningbo SUPU Electronics Co., Ltd.

Address: No. 150, Xinxing 4th Road, High-tech Industrial Development Zone,
Cixi City, Zhejiang Province, China

Zip code: 315303

Ningbo SUPU Electronics Co., Ltd.

Switchboard: +86 574-63288158

Fax: +86 574-63288170

E-mail:supucontact@supu.cn

Service Hotline: 400-626-6336



Wechat

Date:2026-04-29 01:21

The right to modify data belongs to SUPU.